

Introduction to Earth Science Lab

Relative Dating

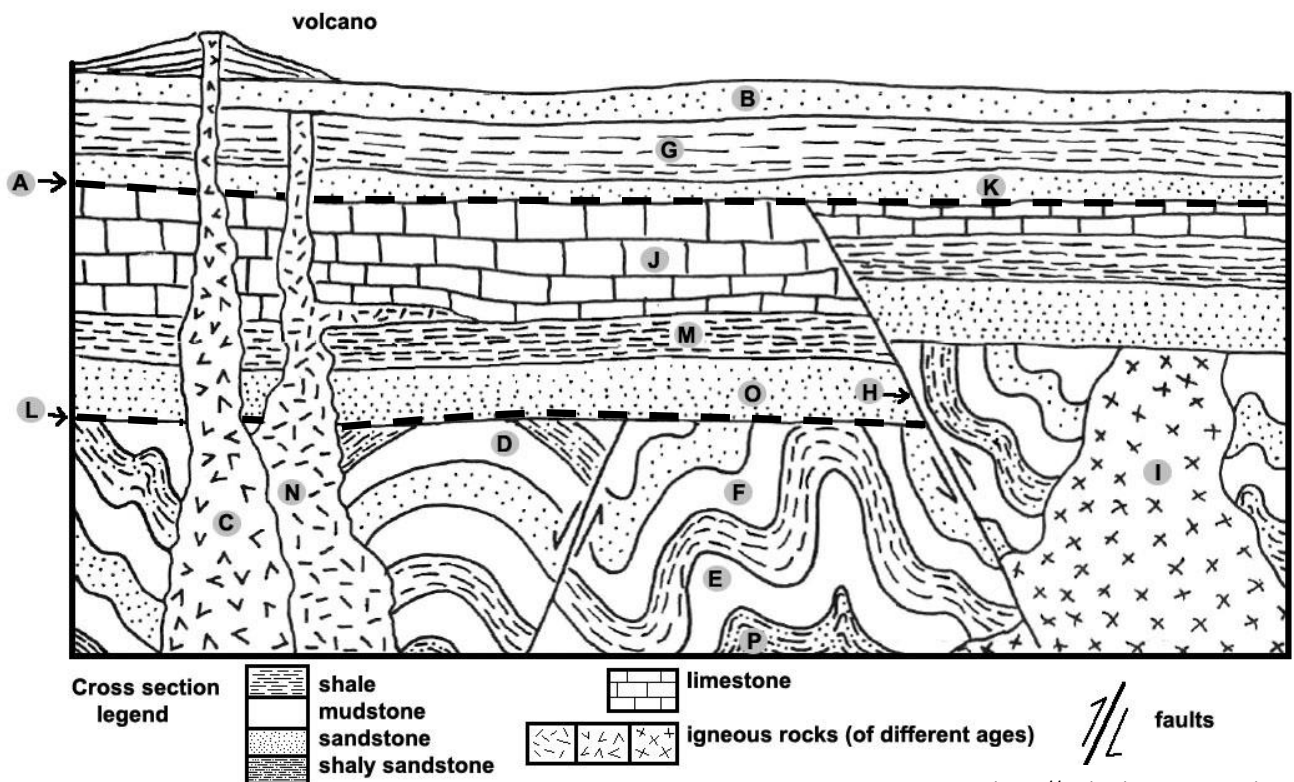
Goal: to observe geological processes that indicate the time at which an event happened.

Previous knowledge: rock cycle and Steno's Principles.

Geological processes: deposition, erosion (or unconformity), intrusion (dike, sill, or batholith), lava flow
Fault (normal or reverse), and deformation (folding or tilting).

Homework

Use the following geological cross-section and work out the geological history.



<https://gotbooks.miracosta.edu>

Notes

- Do your own work.
- Put the oldest event on bottom.
- Use a three-part description (process, rock type, and identifier).
- Type your response.
- The title page should include: title of lab, your name, the date, and the course name.
- Number all pages.
- Use one staple to hold all pages together.